

Symmetry, Reflection and Rotation

Q1. Which letters in the word **PRICK** have no line of symmetry?

Answer: _____

Q2. Draw the line of symmetry in each of the following letters (if any):



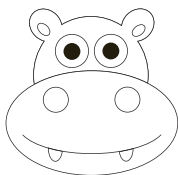
Q3. Observe the following letters carefully. Find the lines of symmetry in each and classify them under suitable heading:

A, G, K, X, L, T, Y, C, U, F

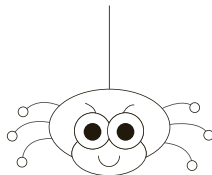
No line of symmetry	One line of symmetry	Two lines of symmetry

Q4. Draw the line of symmetry for the following figures:

a.



b.



Q5. Name a quadrilateral having the following lines of symmetry :

a. 1 : _____

b. 2 : _____

c. 4 : _____

Q6. Find the coordinates of the following points when reflected in the X-axis, Y-axis and origin and fill in the table below:

Co-ordinates of the point	Co-ordinates when reflected in the X-axis	Co-ordinates when reflected in the Y-axis	Co-ordinates when reflected in the origin
(2, 3)			
(1, -3)			
(-4, 7)			
(-8, -1)			

Q7. A $\triangle PQR$ having vertices P (2, -3), Q (1, 2) and R (5, 2), is reflected in the Y-axis to form a triangle $P'Q'R'$. Write the co-ordinates of the vertices $P'Q'R'$ in the space provided.

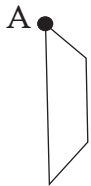
Answer:

Co-ordinates of P' : _____

Co-ordinates of Q' : _____

Co-ordinates of R' : _____

Q8. Draw the images of the following figure when rotated about the point A.



a. 180° anti-clockwise

b. 90° anti-clockwise

Q9. Draw two points A (1, 1) and B (2, 2). Join AB. Rotate AB (clockwise) about the origin through 180° to the position A'B'. Find the coordinates of A' and B'. Find the length of both line segments AB and A'B' and tick the correct option:

- a. AB is longer than A'B'
- b. A'B' is longer than AB
- c. AB and A'B' have same length

Co-ordinates of A' : _____

Co-ordinates of B' : _____

Q10. Draw ΔPQR with vertices P (1, 2), Q (2, 3) and R (1, 3). Rotate it (clockwise) about the origin through 180° . Write the coordinates of P', Q' and R'.

Co-ordinates of P' : _____

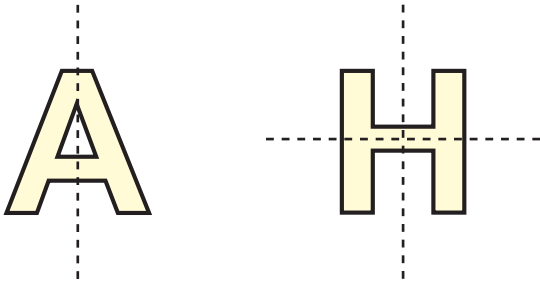
Co-ordinates of Q' : _____

Co-ordinates of R' : _____

Answers

1. P, R

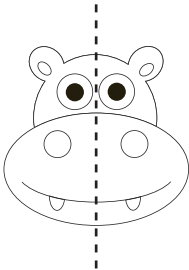
2.



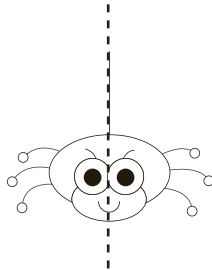
3.

No line of symmetry	One line of symmetry	Two lines of symmetry
G	A	X
F	K	
L	T	
	Y	
	C	
	U	

4.



a.



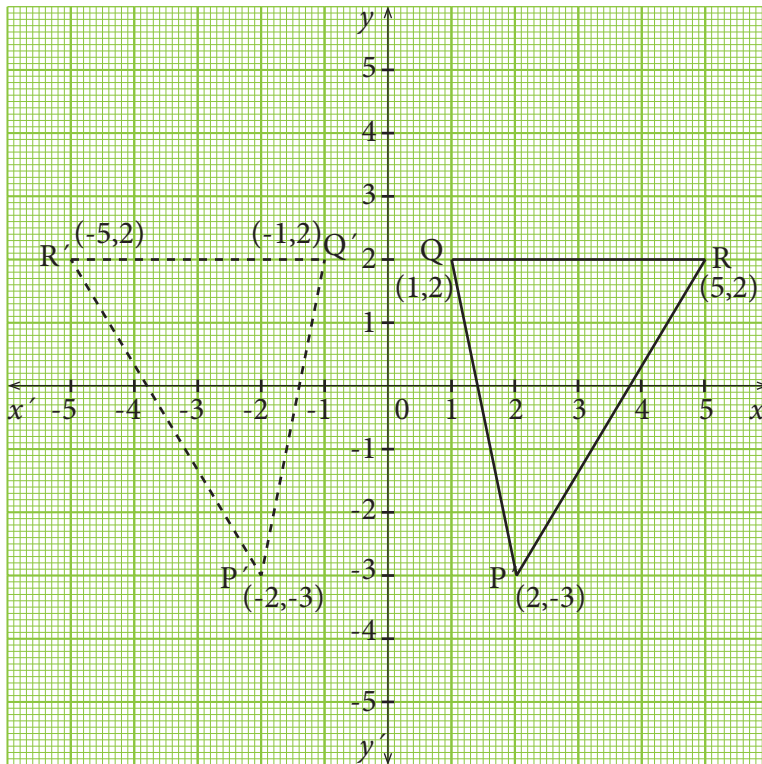
b.

5. a. kite; b. rectangle; c. square

6.

Co-ordinates of the point	Co-ordinates when reflected in the X-axis	Co-ordinates when reflected in the Y-axis	Co-ordinates when reflected in the origin
(2, 3)	(2, -3)	(-2, 3)	(-2, -3)
(1, -3)	(1, 3)	(-1, -3)	(-1, 3)
(-4, 7)	(-4, -7)	(4, 7)	(4, -7)
(-8, -1)	(-8, 1)	(8, -1)	(8, 1)

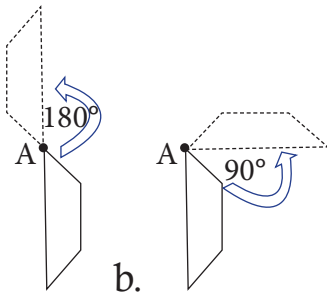
7.



Co-ordinates of P': $(-2, -3)$

Co-ordinates of Q': $(-1, 2)$

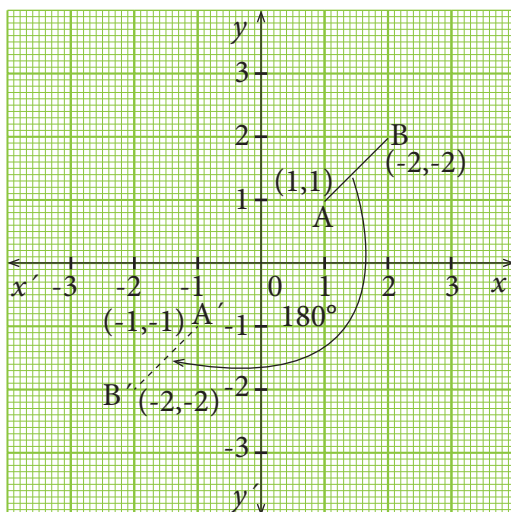
Co-ordinates of R': $(-5, 2)$



8. a.

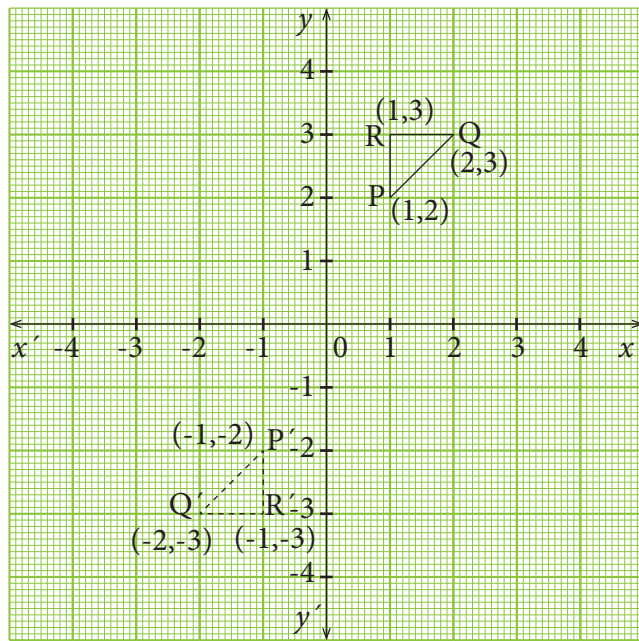
b.

9.



(c)

Co-ordinates of A': $(-1, -1)$; Co-ordinates of B': $(-2, -2)$



10.

Co-ordinates of P' : $(-1, -2)$

Co-ordinates of Q' : $(-2, -3)$

Co-ordinates of R' : $(-1, -3)$